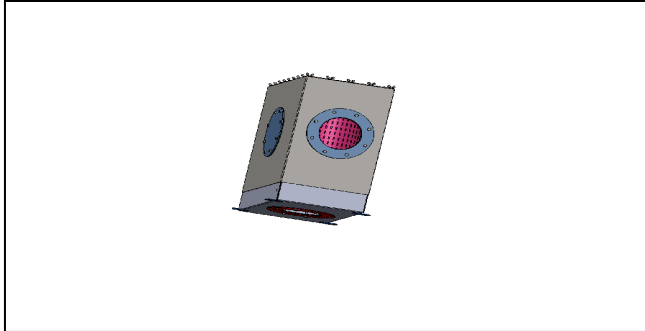
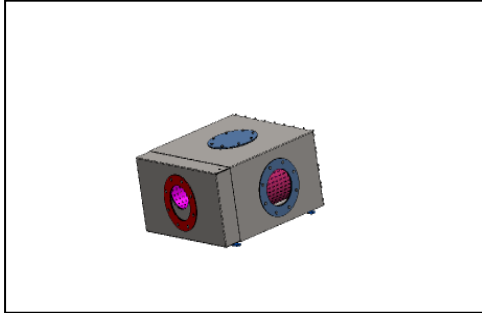


## BP-Diesel Particle Filter Type 900-16 Item no. BP900160

The BP particle filter is suitable for working machines with diesel engines. The robust housing is made of stainless steel material 1.4301. The housing lid is attached with wing nuts, permitting quick and easy exchange of the filter cartridges.



The connection for exhaust entry and exit has an inner diameter of 214 mm. The particle filter can be set up independently of installation position; therefore, the foot tabs are attached according to customer request. There are two options provided for the exhaust exit at the filter housing. Flange and blind lid at the filter housing can be replaced. The blind lid and three seals are part of the delivery, while the flanges are produced on request against surcharge.

For filter assembly, always observe that the pipeline to the particle filter is not narrowed. The BP particle filter does not replace the muffler; together with the compact BP particle filter cartridges, it achieves improvement of the muffling performance.

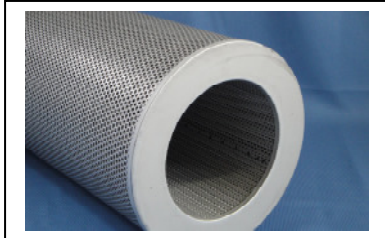
The dynamic pressure is monitored via the pressure switch set to 150 mbar and additionally with a manometer.

Design:	The particle filter can be used at an exhaust volume of up to 4000 cbm/h
Service life:	Approx. 400 operating hours depending on maintenance condition and soot emission of the motor
Scope of delivery:	Particle filter with 2 filter cartridges, Pressure switch with cables, PCB, LED, manometer and required connection parts for dynamic pressure monitoring
Exhaust temperature:	Up to max. 480 °C
Separation rate:	>97% of all particles

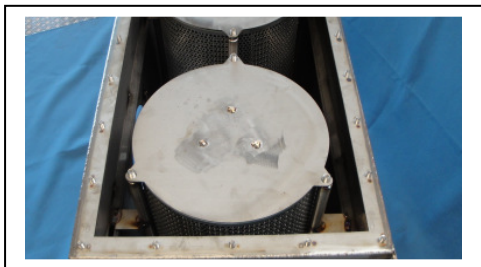
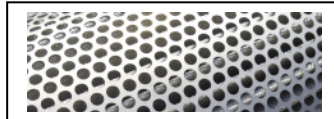
Dimension: 860 mm x 453 mm x 875 mm

Weight: BP particle filter complete 120 kg  
Filter cartridge 17 kg

Filter cartridge for the BP-diesel particle filter type 900-16  
Item no. BP450801



With 4-layer filter layer  
With high service life  
Not flammable



**Explanation on the design for BP particle filter:**

$L = \text{displacement} \times r = \text{max. rotating speed} \times F = \text{factor} \times T = \text{temperature} \times 60 : 2000 = \text{exhaust volume}$

<b>F = factor:</b>	<b>Naturally aspirated engine</b>	<b>0.85</b>
	<b>Turbo</b>	<b>1.7</b>
	<b>Turbo/LLK</b>	<b>2.0</b>

<b>T = exhaust temperature to the particle filter:</b>	<b>250°C</b>	<b>1.8</b>
	<b>300°C</b>	<b>2.0</b>
	<b>350°C</b>	<b>2.2</b>

Vert certificate: Inspection no. B175/12.05.

The provisions of TRGS 554 are met.

Disposal of the used filter cartridge: Above-ground deposit of deposit category II  
- Tied into a plastic bag -

The corresponding expert reports are present.

**Baumüller & Partner GmbH, Im Meisental 11, 67433 Neustadt**  
**Phone +49 6321-82505 – Fax +49 6321-30078**  
**Email: info@baumueller-partner-gmbh.de – www:baumueller-partner-gmbh.de**